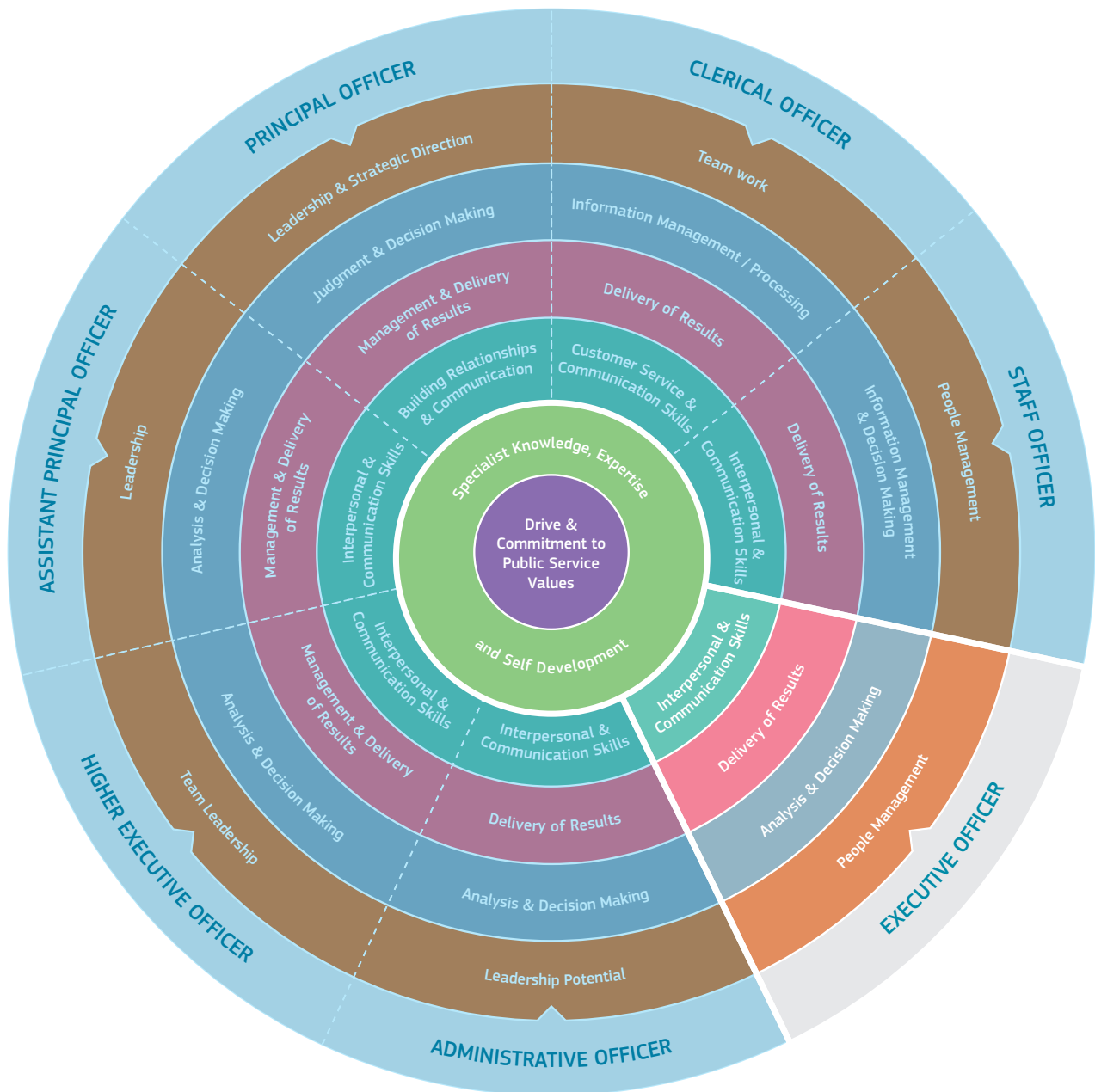


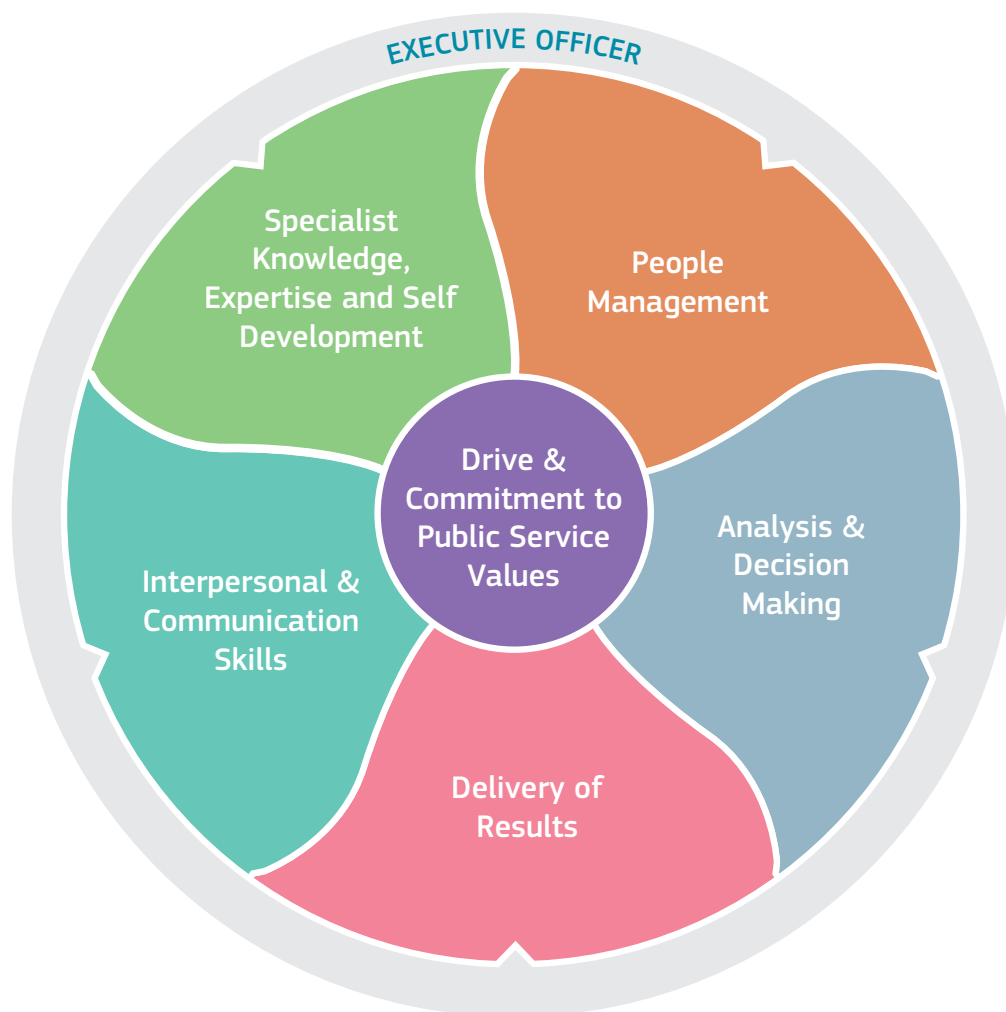
# PAS Civil Service Competency Models

## Executive Officer Level



# Irish Civil Service Executive Officer Level Competency

---



## Notes

---

---

---

---

---

---

---



## Executive Officer Level Competencies

### Effective Performance Indicators

People Management	Consults and encourages the full engagement of the team, encouraging open and constructive discussions around work issues
	Gets the best out of individuals and the team, encouraging good performance and addressing any performance issues that may arise
	Values and supports the development of others and the team
	Encourages and supports new and more effective ways of working
	Deals with tensions within the team in a constructive fashion
	Encourages, listens to and acts on feedback from the team to make improvements
	Actively shares information, knowledge and expertise to help the team to meet its objectives
Analysis & Decision Making	Effectively deals with a wide range of information sources, investigating all relevant issues
	Understands the practical implication of information in relation to the broader context in which s/he works – procedures, divisional objectives etc
	Identifies and understands key issues and trends
	Correctly extracts & interprets numerical information, conducting accurate numerical calculations
	Draws accurate conclusions & makes balanced and fair recommendations backed up with evidence
Delivery of Results	Takes ownership of tasks and is determined to see them through to a satisfactory conclusion
	Is logical and pragmatic in approach, setting objectives and delivering the best possible results with the resources available through effective prioritisation
	Constructively challenges existing approaches to improve efficient customer service delivery
	Accurately estimates time parameters for project, making contingencies to overcome obstacles
	Minimises errors, reviewing learning and ensuring remedies are in place
	Maximises the input of own team in ensuring effective delivery of results
	Ensures proper service delivery procedures/protocols/reviews are in place and implemented
Interpersonal & Communication Skills	Modifies communication approach to suit the needs of a situation/ audience
	Actively listens to the views of others
	Liaises with other groups to gain co-operation.
	Negotiates, where necessary, in order to reach a satisfactory outcome
	Maintains a focus on dealing with customers in an effective, efficient and respectful manner
	Is assertive and professional when dealing with challenging issues
	Expresses self in a clear and articulate manner when speaking and in writing
Specialist Knowledge, Expertise and Self Development	Displays high levels of skills/ expertise in own area and provides guidance to colleagues
	Has a clear understanding of the role, objectives and targets and how they support the service delivered by the unit and Department/ Organisation and can communicate this to the team
	Leads by example, demonstrating the importance of development by setting time aside for development initiatives for self and the team
Drive & Commitment to Public Service Values	Is committed to the role, consistently striving to perform at a high level
	Demonstrates flexibility and openness to change
	Is resilient and perseveres to obtain objectives despite obstacles or setbacks
	Ensures that customer service is at the heart of own/team work
	Is personally honest and trustworthy
	Acts with integrity and encourages this in others



**An tSeirbhís um Cheapacháin Phoiblí**  
**Public Appointments Service**

Public Appointments Service,  
Chapter House,  
26/30 Upper Abbey Street,  
Dublin 1

Tel: +353-1-8587400  
Email: [info@publicjobs.ie](mailto:info@publicjobs.ie)  
Web: [www.publicjobs.ie](http://www.publicjobs.ie)